

Data Presentation

Delivered as a tightly integrated feature in BEA WebLogic Workshop and Borland JBuilder, Crystal Reports for Java simplifies and accelerates the process of embedding reports inside JavaServer Pages. It is also available as a feature set in Crystal Reports 10 Advanced Developer and Developer Editions.

Use Crystal Reports for Java to create and render reports as an integral part of your J2EE applications. BEA WebLogic Server™, IBM WebSphere® Application Server, and Apache Tomcat are supported.

Simplify and Accelerate Data Presentation within JavaServer Pages

An alternative to hand-coding HTML, Crystal Reports® for Java is an intuitive reporting toolkit that simplifies and accelerates the process of accessing, formatting, and integrating data within JavaServer Pages (JSP). It is a tightly integrated feature in BEA® WebLogic Workshop™ and Borland® JBuilder® X and is also available as part of Crystal Reports 10 Advanced Developer and Developer Editions.

Use Crystal Reports for Java to:

- Expedite data connectivity and formatting using an intuitive design environment
- Minimize the repetitive and tedious nature of embedding dynamic, formatted data into your JSP pages
- Reduce application maintenance churn by separating data connectivity and presentation from core application code

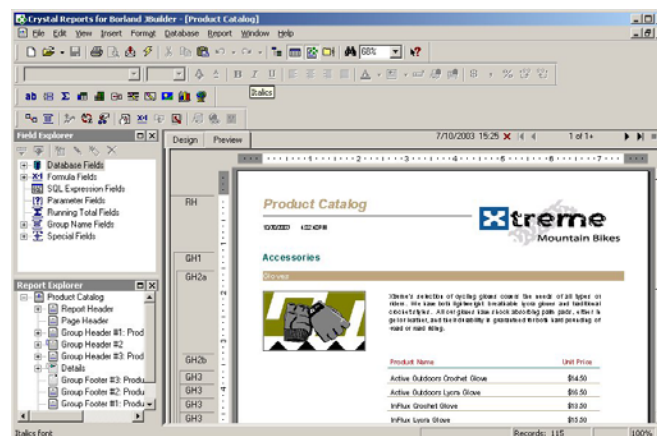
Easily Access and Format Data

Crystal Reports for Java significantly reduces the amount of HTML you need to generate by hand. Using its intuitive visual designer, developers can quickly connect to data and transform it into dynamic report templates. A visual drag-and-drop data explorer simplifies JDBC data connectivity. Hundreds of formatting options, including grouping, sorting, charting, formulas, parameters, cross-tabs, and drill-down can be easily used to provide a richer end-user experience within a zero-client footprint.

Minimize the Tedious Nature of Embedding Dynamic Data into JSP Pages

From within a Java IDE, you can quickly add new or existing report files to your projects as resources. This enables you to manage them as part of your project and deploy them with your web applications. Built-in wizards guide you through the process, eliminating a lot of the tedious work required to hand-code similar functionality.

Easily embed reports into your JSP page – right from within a Java IDE.



Crystal Reports for Java Development

Simplify and Accelerate Data Presentation within JavaServer Pages

Reduce Presentation Layer Maintenance

Crystal Reports for Java represents a flexible design pattern whereby data and presentation is decoupled from core business logic. This helps expedite content development and maintenance. Web designers can focus on usability, creating highly formatted content using the intuitive design environment of Crystal Reports. This frees up application developers to focus on designing and implementing business logic within the application. Since data connectivity and presentation are not hard-coded into the application, it is much easier for web designers to modify the content or add more end-user manipulation capabilities without impacting core application code. This also makes the business logic easier to maintain and the application more resilient for managing ever-changing user requirements.

Key Features

Custom Report Designer

Access, format, and integrate data into your JSP pages using a visual design environment that produces report templates.

100% Java Reporting Component

Transform report templates into highly formatted, dynamic HTML from within a J2EE application server. Applications that employ this powerful component are fully compatible with Business Objects enterprise reporting technologies for seamless upgrading when additional scalability or functionality is required.

Java Viewer API

Provide your end users with customized report interaction within a zero-client footprint. Let end users drill down into data, navigate across linked content, or repurpose content by printing and exporting to a variety of popular formats including PDF and RTF.

Custom Tag Library

Reduce the amount of coding required to embed report templates into your JSP pages.

Use a Common Standard for Data Presentation

The independent standard for cross-platform reporting, Crystal Reports is tightly integrated into leading Java and .NET IDEs. Developers can use one common standard reporting technology for all data presentation and information delivery requirements.

Existing Crystal reports (.rpt) can be reused for your J2EE applications. A batch upgrade utility is available to upgrade existing reports for use by the Java Reporting Component.

Scale and Extend Applications to Support New Requirements

Crystal Reports for Java is built using the same object model as Business Objects enterprise reporting technologies. As scalability or functionality needs evolve to include multi-level security, ad hoc report personalization at runtime, high-volume production reporting with scheduling, or other enterprise reporting requirements, you can update applications to use Crystal Enterprise with minimal coding.

Visit the Business Objects online Java developer community at <http://www.businessobjects.com/javazone> for access to a range of sample applications, white papers, tutorials, and other technical information.

► www.businessobjects.com

Americas

Tel: +1 800 527 0580

Europe

Tel: +33 1 41 25 21 21

Asia-Pacific

Tel: +65 887 4228

Japan

Tel: +81 3 5720 3570



The Business Objects product and technology are protected by US patent numbers 5,555,403, 6,247,008, 6,578,027, 6,490,593, and 6,289,352. The Business Objects logo, WebIntelligence, BusinessQuery, the Business Objects tagline, BusinessObjects, BusinessObjects Broadcast Agent, Rapid Mart, Set Analyzer, Crystal Analysis, Crystal Enterprise, Crystal Reports, Crystal Applications, Crystal Analysis Holos, and Crystal Info are trademarks or registered trademarks of Business Objects SA in the United States and/or other countries. Various product and service names referenced herein may be trademarks of Business Objects SA. All other company, product, or brand names mentioned herein, may be the trademarks of their respective owners. Specifications subject to change without notice. Not responsible for errors or